



New Insights on the Role of Sodium in the Physiological Regulation of Blood Pressure and Development of Hypertension

*Erietta Polychronopoulou, Philippe Braconnier and Michel Burnier**

Service of Nephrology and Hypertension, Department of Medicine, Centre Hospitalier Universitaire Vaudois, Lausanne, Switzerland

OPEN ACCESS

Edited by:

Brett M. Mitchell,
Texas A&M Health Science Center,
United States

Reviewed by:

Stefano Omboni,
Istituto Italiano di Telemedicina, Italy
Elise Peery Gomez-Sanchez,
University of Mississippi Medical
Center School of Dentistry,
United States

*Correspondence:

Michel Burnier
michel.burnier@chuv.ch

Specialty section:

This article was submitted to
Hypertension,
a section of the journal
Frontiers in Cardiovascular Medicine

Received: 10 July 2019

Accepted: 29 August 2019

Published: 16 September 2019

Citation:

Polychronopoulou E, Braconnier P
and Burnier M (2019) New Insights on
the Role of Sodium in the Physiological
Regulation of Blood Pressure and
Development of Hypertension.
Front. Cardiovasc. Med. 6:136.
doi: 10.3389/fcvm.2019.00136

A precise maintenance of sodium and fluid balance is an essential step in the regulation of blood pressure and alterations of this balance may lead to the development of hypertension. In recent years, several new advances were made in our understanding of the interaction between sodium and blood pressure regulation. The first is the discovery made possible with by new technology, such as ^{23}Na -MRI, that sodium can be stored non-osmotically in tissues including the skin and muscles particularly when subjects are on a high sodium diet or have a reduced renal capacity to excrete sodium. These observations prompted the refinement of the original model of regulation of sodium balance from a two-compartment model comprising the extracellular fluid within the intravascular and interstitial spaces to a three-compartment model that includes the intracellular space of some tissues, most prominently the skin. In this new model, the immune system plays a role, thereby supporting many previous studies indicating that the immune system is a crucial co-contributor to the maintenance of hypertension through pro-hypertensive effects in the kidney, vasculature, and brain. Lastly, there is now evidence that sodium can affect the gut microbiome, and induce pro-inflammatory and immune responses, which might contribute to the development of salt-sensitive hypertension.

Keywords: skin, muscle, sweat, macrophages, immunity, microbiome

INTRODUCTION

Blood pressure (BP) may appear as a very simple physiological parameter defined as the product of cardiac output and peripheral arterial resistance. Yet, the regulation of BP is a highly complex, multi-facet interplay between renal, neural, cardiac, vascular, and endocrine factors under the influence of genetic and environmental factors (1). Thus, the precise mechanism whereby some individuals develop an elevated BP leading to hypertension remains undetermined in a majority of them. The Mosaic Theory of hypertension described by Page in 1960 (2), which included interactions among genetics, environment, adaptive, neural, mechanical, and hormonal perturbations (sympathetic nervous system, renin-angiotensin-aldosterone system) as the basis of hypertension, has been substantially modified in 2014 (1). It should probably be adapted further to include new players like the skin, the muscles, the immune system and the microbiome (3). Indeed, several important experimental and clinical studies have brought new insights into the possible role

of these factors in the physiological regulation of BP. These new regulatory mechanisms may also begin to explain crucial involvement of the immune system in the development of salt-sensitive forms of hypertension for which there is ample evidence, but few postulated mechanisms (4, 5).

SODIUM AND BP REGULATION: FROM A 2- TO A 3-COMPARTMENT MODEL INCLUDING THE SKIN AND MUSCLES

In 1972, Dahl reported the important correlation between dietary salt consumption and hypertension (6) and Guyton developed a complex model of BP regulation, in which the kidney is the key regulator maintaining the balance between sodium intake, extracellular volume and BP. He introduced the important concept of pressure natriuresis as the mechanism through which the kidney has the ability to preserve a normal BP through its functions to regulate volume homeostasis and sodium reabsorption (7, 8). His hypothesis consists essentially of a two-compartment model with the extracellular fluid volume within the intravascular space being in equilibrium with the interstitial space volume. Sodium being the major cation in the extracellular fluid, any change in urinary sodium excretion would lead to an increase in the intravascular fluid volume, thereby increasing BP and in some cases inducing hypertension.

The two-compartment model has been challenged in recent years due to two major factors. First, the observation that on a fixed sodium intake total-body Na⁺ content could exceed weight gain, suggesting that sodium accumulated without being osmotically active and that salt was stored in a third body compartment (9). The second important factor was the possibility of measuring tissue sodium content in muscles and skin using ²³Na-magnetic resonance imaging (MRI) (10).

THE NON-OSMOTIC STORAGE OF SALT IN MUSCLES AND SKIN

The traditional physiological concept placing the kidney in the very center of the regulation of extracellular volume and BP homeostasis, has been challenged by the group of Titze et al. after studying a group of astronauts simulating a long-term flight to Mars (9). They had the opportunity to expose this group of astronauts to different constant salt diets (6, 9, and 12 g/day) during 35 days and to perform simultaneously daily 24 h urine collections. To their great surprise, although salt intake was fixed, they noticed large variations in urinary sodium excretion. Changes in total-body Na⁺ exhibited rhythmic fluctuation within a day, which were not associated with parallel changes in body weight or extracellular water. However, the variations correlated positively with urinary aldosterone excretion and inversely to urinary cortisol. Toward the end of the observation period the total-body Na⁺ content exceeded the weight gain, suggesting that sodium had accumulated in another compartment without being osmotically active (Figure 1).

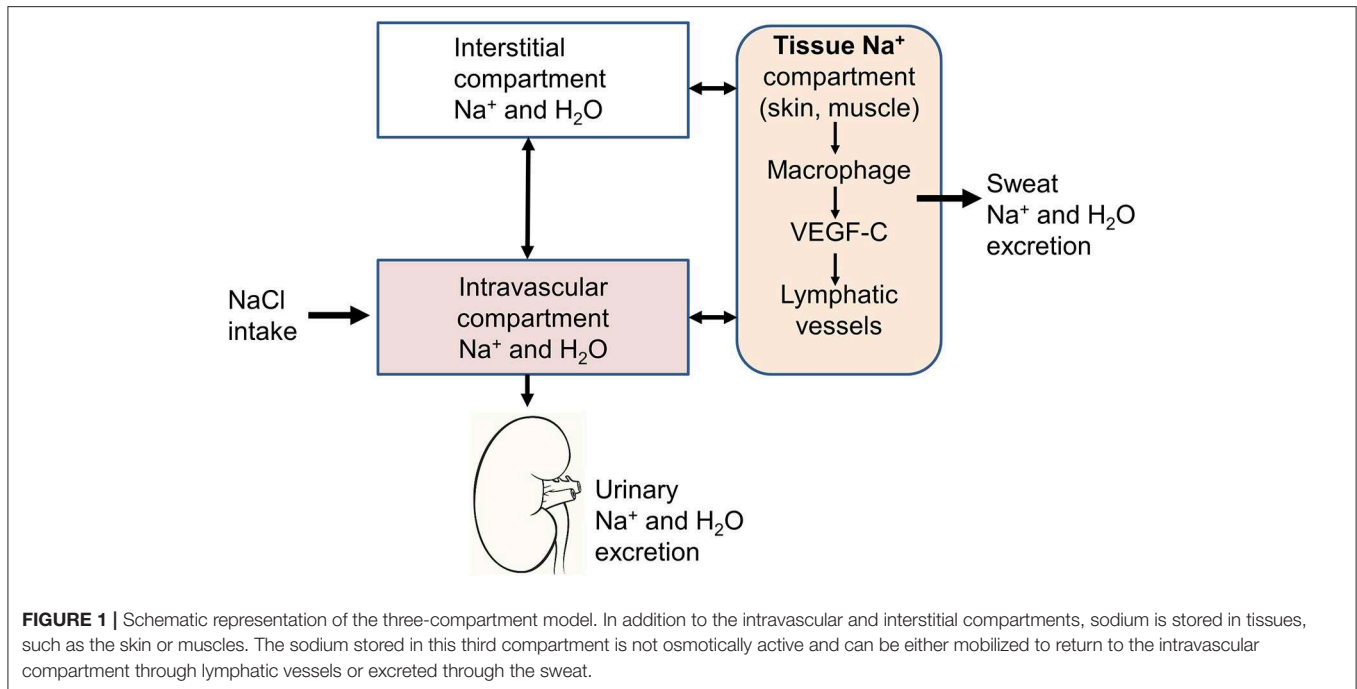
Skeletal muscle and skin are the body's major extracellular fluid compartments. Animal studies revealed that sodium is

stored in the skin without concomitant water accumulation, bound to negatively charged glycosaminoglycan (GAG) (11–13). Skin GAG content can be directly measured by Western blot analysis and the Na⁺ concentration in skin can be determined by dry ashing and subsequent measurements of cations with atomic absorption spectrometry. Experimentally, the osmotically inactive skin Na⁺ can be mobilized by salt deprivation, which induces a reduction of the negatively charged skin glycosaminoglycan content (9). Furthermore, dietary salt loading is associated with an increased synthesis of GAG in the skin. These observations suggest that the storage of osmotically inactive Na in the skin is an active process. Skin sodium is stored directly under the keratinocyte layer in a microenvironment that is hypertonic to plasma suggesting sodium gradient formation in a kidney-like countercurrent system (14). In fact, in contrast to the lymph, which is isosmotic compared to the plasma, the skin is hyperosmotic and can control its own electrolyte microenvironment by creating a urea gradient from the epidermis to the dermis (15).

Interestingly, the sodium content in the interstitium seems to be regulated by the immune system through local modulations of the capillary lymphatic system in the skin (16). The skin phagocytes sense the hypertonic accumulation of sodium in the skin and this leads to an activation of the tonicity-responsive enhancer-binding protein (TONEBP, also known as NFAT5) and initiates the expression and secretion of VEGFC (vascular endothelial growth factor C). This latter has a double effect to increase the electrolyte clearance via cutaneous lymph vessels and to stimulate eNOS expression in blood vessels. Thereby immune cells exert a homeostatic and BP-regulatory control of interstitial electrolyte clearance via TONEBP and VEGFC and their respective impact on cutaneous lymphatic capillary function. Interestingly, mononuclear phagocyte system cell depletion or VEGF-C trapping blocks VEGF-C signaling and leads to sodium accumulation in the skin and elevated BP in response to high salt diet (17). Therefore, this new regulatory mechanism may contribute to the development of salt-sensitive forms of hypertension. Clinical studies have shown an age-dependent increase in skin tissue Na⁺ content that is associated with lower circulating VEGF-C levels, suggesting that VEGF-C enhances skin electrolyte clearance (18). Keratinocytes regulate skin perfusion by changing the balance between two hypoxia-inducible factor (HIF) transcription factor isoforms, HIF-1 α and HIF-2 α activity, and thereby regulate systemic arterial pressure by nitric oxide (NO)-dependent mechanisms (19, 20). In patients with essential hypertension, increased BP levels are associated with reduced NO levels in the skin secondary to a reduction of cutaneous HIF-1 α and an increase of HIF-2 α .

Elevated concentrations of sodium have also been documented in skeletal muscles of animals with experimental hypertension and in hypertensive patients (10, 21). As observed in the skin, the sodium concentration measured in muscles was higher than that measured in the plasma and could be mobilized with specific treatments increasing salt elimination, such as diuretics or dialysis.

This new concept of regulation of sodium balance and extracellular volumes not only through the kidney but also skin



and muscles, might question the utility of 24 h urine collections to estimate salt intake. In fact, due the biologic variability of the urinary excretion of sodium, a 3 g difference in salt intake per day is detected correctly through a 24 h urine collection in only 50% in a stringently controlled environment (22). For this reason, single 24 h urine collections at intakes ranging from 6 to 12 g salt per day are probably not suitable to detect a 3 g difference in individual salt intake and repeated collections should be done to assess sodium intake more accurately.

INFORMATION FROM NEW METHODS TO MEASURE SODIUM IN TISSUE

The development of new technologies to measure sodium content in tissues has been an important adjunct to studies supporting the hypothesis of a 3-compartment model. Today sodium content in tissues can be visualized and quantified directly in skeletal muscles and skin through the development of ^{23}Na -magnetic resonance imaging (MRI). By coupling ^{23}Na -MRI with traditional ^1H -MRI, it is possible to demonstrate that sodium accumulates in the skin and muscles without concomitant water accumulation (23). In a cohort of 56 healthy subjects and 57 patients with essential hypertension, ^{23}Na -MRI measurements showed that patients with refractory hypertension had an increased tissue Na^+ content compared with normotensive controls suggesting that sodium storage in the skin is associated with hypertension (23). In addition, ^{23}Na -MRI studies have also revealed that the sodium content in the skin and muscles increases with age, an observation going along with the higher prevalence of hypertension in elderly subjects. Men appear to have a higher sodium content in the skin than women and women have higher muscle sodium than skin sodium

(24). Interestingly, in case of primary hyperaldosteronism, the sodium content in skin and muscles is also elevated and is reduced by adrenalectomy or the prescription of an aldosterone antagonist (10). High muscle sodium concentrations have also been measured in patients with type 2 diabetes on maintenance dialysis (25). In these patients, skin sodium correlates with left ventricular hypertrophy and insulin resistance and can be reduced during a dialysis session (25, 26).

DOES SWEAT HAVE A ROLE IN THE REGULATION OF SODIUM BALANCE?

Sweat- the major product of the skin- may also be involved in the control of sodium balance in humans. The major function of sweat is the regulation of body temperature, but sweat glands are also able to secrete water and salt through several channels (27). Astonishingly, the sweat gland has some similarity with the convoluted tubules of the kidney as cells of the secretory coil of sweat glands contain ion channels, pumps and co-transporters, such as the $\text{Na}^+-\text{K}^+-2\text{Cl}^-$ cotransporter (NKCC1), $\text{Na}^+-\text{K}^+-\text{ATPase}$, Na^+-H^+ exchanger (NHE1), aquaporine-5 (AQP5) (28). The sweat duct itself expresses epithelial sodium channel (ENaC), $\text{Na}^+-\text{K}^+-\text{ATPase}$ and NHE1 participating in the reabsorption of ions. In particular, ENaC is expressed strongly in all epidermal layers and is located on the apical side of membranes in eccrine glands and ducts, reabsorbing Na^+ ions (29). In a detailed sodium balance study performed by Heer et al. in healthy volunteers on salt intakes of about 3, 12, and 32 g/day, skin losses of sodium and chloride by sweat were reported to be negligible (mean sweat sodium excretion varied between 2.88 ± 0.35 and 4.92 ± 0.28 mmol/day) and were independent from salt intake (30). However, the low number of participants and the cumbersome

method of sweat collection (volunteers wore an all-body cotton suit for 24 h) limited the interpretation of this study as only 3 subjects underwent sweat testing. Sports sciences provide the most recent data about sweat electrolytes and their excretion in humans (excluding cystic fibrosis). Thus, in a study of 157 marathon runners, 20% presented sweat salt losses equivalent to 3.5 ± 0.6 g of NaCl per liter of sweat which means that during a race time of 4 h and with a sweat rate of 1 L/h, salt losses can be as high as 14 g of NaCl (31).

In a cross-over design, we have recently assessed muscle sodium content by ^{23}Na -MRI in 38 healthy normotensive volunteers after 5 days of high-sodium diet (HS) (6 g of salt added to their normal diet) and 5 days of a low-sodium diet (LS). In a sub-group of 18 participants we conducted quantitative pilocarpine iontophoretic sweat collections and measured the sodium concentration in sweat (32). Under HS conditions, urinary sodium excretion, muscle and sweat sodium concentrations all increased significantly. Sweat sodium concentrations correlated positively with salt intake as estimated by 24 h urine sodium excretion. Plasma aldosterone and plasma renin activity were negatively associated with both muscle and sweat sodium content. These results indicate that sweat sodium excretion are significantly higher on a high salt intake in healthy subjects and suggest that sweat may also play a role in regulating sodium balance in humans. These findings extend those from studies of the expression of the mineralocorticoid receptor (MR) and 11β -hydroxysteroid dehydrogenase in sweat gland epithelium, as well as the relationship between MR expression, salt intake and aldosterone levels (33–37).

SALT AND THE IMMUNE SYSTEM IN HYPERTENSION

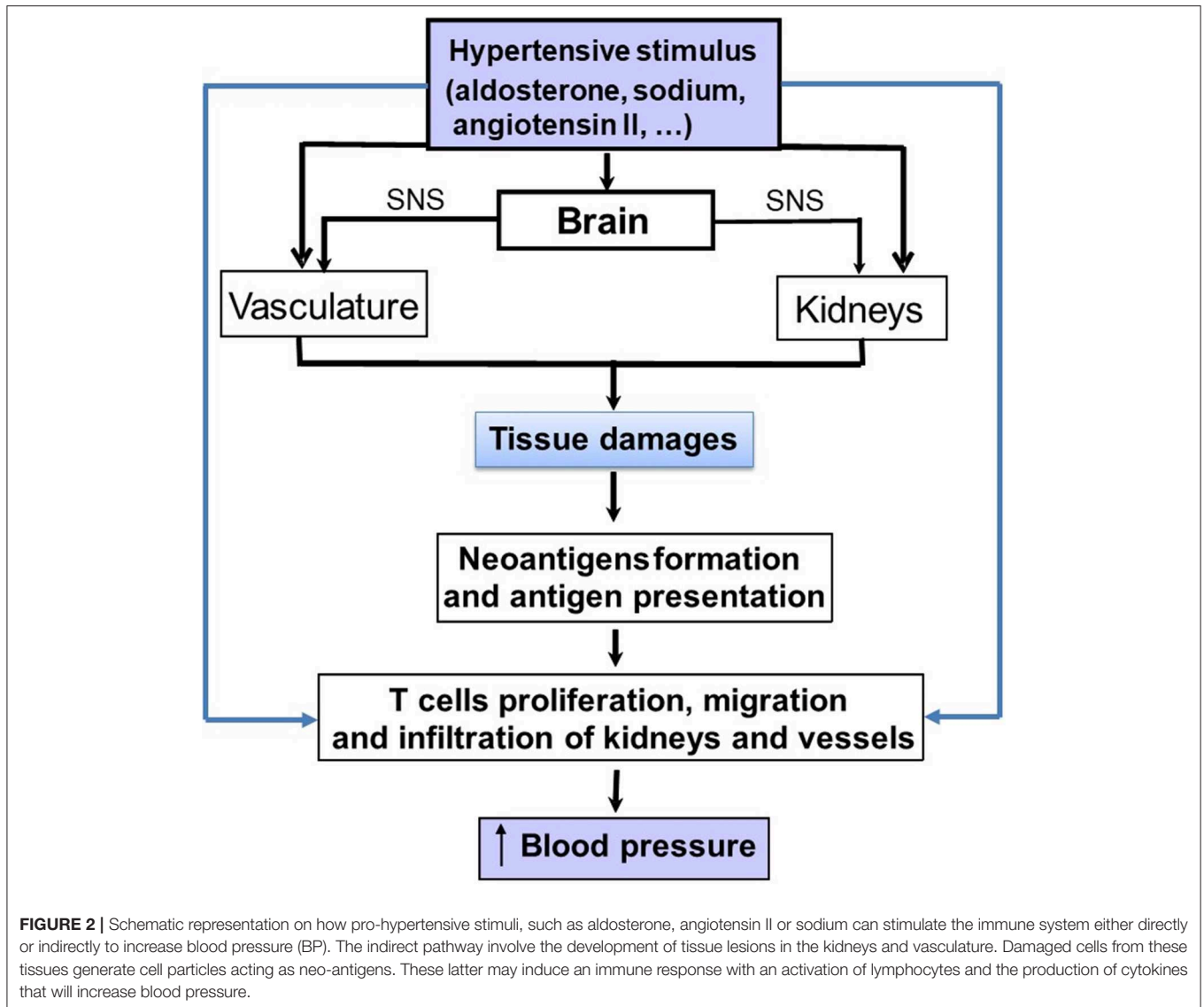
The three-compartment model described above involved the immune system through immune cells including macrophages as important components leading to sodium storage or release from tissues where it has accumulated. Of course, this model does not exclude the central role of the kidney but add another regulatory system in the model, in which the immune system is involved. Today, most recent hypotheses on the pathophysiology of hypertension consistently include the immune system as a crucial co-contributor to the development of hypertension through pro-hypertensive effects in the kidney, vasculature, and brain (38–40) (**Figure 2**). Actually, the first time that the immune system was implicated in the process of hypertension generation was in 1954 by RH Heptinstall (41), who reported data on renal biopsies of hypertensive patients who showed early and scattered arteriolar hyalinization and intimal thickening of some small arteries. He also reported an accumulation of immune cells in kidney biopsies of hypertensive patient (41). The immune system is divided in two functional compartments: the innate immune system, which reacts rapidly, but is rather non-specific, with responses to a wide array of pathogens, and the adaptive immune system, which initiates slower but develops antigen-specific responses. Both components have been implicated as

potential contributors to the development of various forms of hypertension, but mainly salt-sensitive hypertension (38, 42–45).

In experimental models, salt-sensitive hypertension is associated with increased renal expression of pro-inflammatory molecules including cytokines, chemokines and adhesion molecules (46–48). In addition, the inflammasome appears to contribute to the development of hypertension in renin-dependent and independent hypertension (49, 50) under the effect of salt, angiotensin II but also the sympathetic nervous system and endothelin (51). Four inflammasomes have been identified so far and the NLR family, pyrin domain-containing 3 (Nlrp3) inflammasome has been the most fully characterized. It forms a multi-protein complex with apoptosis-associated speck-like protein containing a caspase recruitment domain (Asc) and the protease Caspase-1, which activates the cytokines pro-interleukin- 1β (IL- 1β) and pro-IL-18. Conversely, pharmacological inhibition of inflammasome has been shown to lower BP in salt-sensitive hypertension (52, 53).

Several studies have also shown that angiotensin II has pro-inflammatory effects and can increase macrophage infiltration in the renal interstitium leading to a sustained elevation of BP, interstitial fibrosis, and preglomerular hypertrophy (53). Angiotensin II stimulates redoxi-sensitive-signaling cascades leading to mitogen activated protein kinase activation, activation of the p38 mitogen, an activated protein kinase, and increased oxidative stress (54, 55). This cascade stimulates the inflammatory mediators NF κ B and activator protein-1 and further leads to production of chemokines involved in macrophage recruitment and prothrombotic agents, such as plasminogen activator inhibitor-1 and adhesion molecules (41, 42). In this context, T lymphocytes may have an important role to mediate the angiotensin II-induced hypertension (43). Thus, it has been postulated that the angiotensin II-induced organ damages generate neo-antigens from damaged cells leading to an immune reaction within the renal tissue and to the production of pro-inflammatory cytokines, such as TNF- α and IL- 1β from infiltrating mononuclear cells. These cytokines may participate in the maintenance of hypertension and salt sensitivity through their effects on renal sodium handling (55). However, angiotensin II has also major effects on the vasculature. Thus, activation of AT $_1$ receptors can cause an hemodynamic injury (52) that leads to further recruitment of monocytes into key effector tissues in hypertension, including the heart, the vascular bed and the kidney (48, 53, 54). Similarly, activation of the MR on cardiac and vascular cells, as well as immune cells, also increases immune cell-mediated effects, which in excess produce hypertension and deleterious cardiovascular and renal remodeling (56–58). **Figure 2** summarizes the direct and indirect mechanisms whereby sodium, aldosterone and angiotensin II can activate the immune system in tissues.

Conversely, some studies showed that immune suppression lowered BP in rats with renal infarction and could disrupt the evolution of salt-sensitive hypertension (47, 48). Thus, the group of Rodriguez showed that during experimental hypertension, T cells infiltrate the kidney leading to the disruption of the nephron's capacity to excrete sodium and water and results in the elevation of BP (36). Inhibition of infiltration of T cells, using a



lymphocyte-specific inhibitor (mycophenolate mofetil) decreases the renal infiltration of T cells, and improves BP and decreases kidney damage (36). In addition, the transfer of lymph node cells from hypertensive to normotensive rats induces hypertension in the recipients, and angiotensin II infusion causes vascular inflammation (44–46).

The three most important cytokines that play a crucial role are IL-17 α , produced from Th17 cells, IFN γ and TNF α . IL-17- α or IFN deficiency can limit expression of sodium transporters in the proximal tubule, an effect which can facilitate the excretion of saline load (49). Experiments in Dahl salt-sensitive rats and a subset of hypertensive humans showed increased BP, albuminuria, and infiltration of macrophages and T cells in the kidneys in response to increased dietary sodium (49). Moreover, pro-inflammatory macrophage cytokines, TNF- α and IL-1 β , both independently influence renal sodium handling in response to activation of the renin-angiotensin system (59). Experiments

with TNF-deficient animals have shown that TNF- α potentiates renal sodium reabsorption in the kidney's thick ascending limb via nitric oxide synthase 3 (NOS3) suppression (51). According to Rucker and his colleagues (55) IL-1 receptor activation decreases the number of NO-expressing macrophages in the kidney and as consequence reduces inhibition of the NKCC2 sodium transporter by NO, thus favoring renal salt retention (59).

IS SALT THE TRIGGERING FACTOR FOR THE PRO-INFLAMMATORY CASCADE?

One hypothesis linking sodium to the inflammatory pathway is that high salt leads to CD4⁺T cell proliferation and produces IL-17 related cytokines (59). These latter induce the secretion of IL-23, IL-6 and IL1 β , and lead to IL17 production from T cells (59). This could result in renal and vascular inflammation,

an impaired renal function, a shift of the pressure/natriuresis relationship and the development of hypertension (59). Thus, Zhang et al. showed that mouse and human macrophages cultured in a high salt environment produced more inflammatory and less anti-inflammatory cytokines than those cultured in normal salt (59). Besides, macrophages stimulated with IL-4 and IL-13 become less anti-inflammatory in the presence of a high-salt environment. *In vitro*, high salt has also been reported to alter protein phosphorylation, an effect, which could affect several important cellular functions and maybe inflammatory pathways (60). Interestingly, in a *post-hoc* analysis of the subjects having participated in the MARS project discussed previously, Yi et al. observed an increase in inflammatory cytokines (IL-6 and IL-23) and a decrease in the anti-inflammatory cytokine IL-10 in the plasma of subjects when on the highest salt intake when compared to the lower salt period (61). This observation suggests that in healthy humans a high-salt diet has a potential to induce an excessive immune response. Therefore, sodium intake itself could be one of the important triggering factor leading to inflammation in hypertension.

SALT, HYPERTENSION, IMMUNITY, AND THE GUT MICROBIOME

In the last decade, the gut microbiota has been associated with the development of several diseases including cardio-metabolic diseases and it has been the subject of an intensive research (62, 63). Considering the impact of a high-salt intake on pro-inflammatory immune cells and the development of hypertension, it appeared logical to investigate the role of salt intake on the composition of the gut microbiota and the possible implication of this latter in the pathogenesis of hypertension. Recently, Wilck et al. (64) described a novel interaction between a high-salt intake and T cell phenotype which is mediated by changes in the composition of the gut microbiome with a depletion of *Lactobacillus* species and reduced generation of bacterial indoles (Figure 3) (65). Wyatt and Crowley (65) have assessed the role of *Lactobacillus* treatment on the development of salt-sensitive hypertension in mice. In these studies, mice on a high salt diet had an elevated BP, but this latter could be reduced with a concomitant treatment with *Lactobacillus*. When

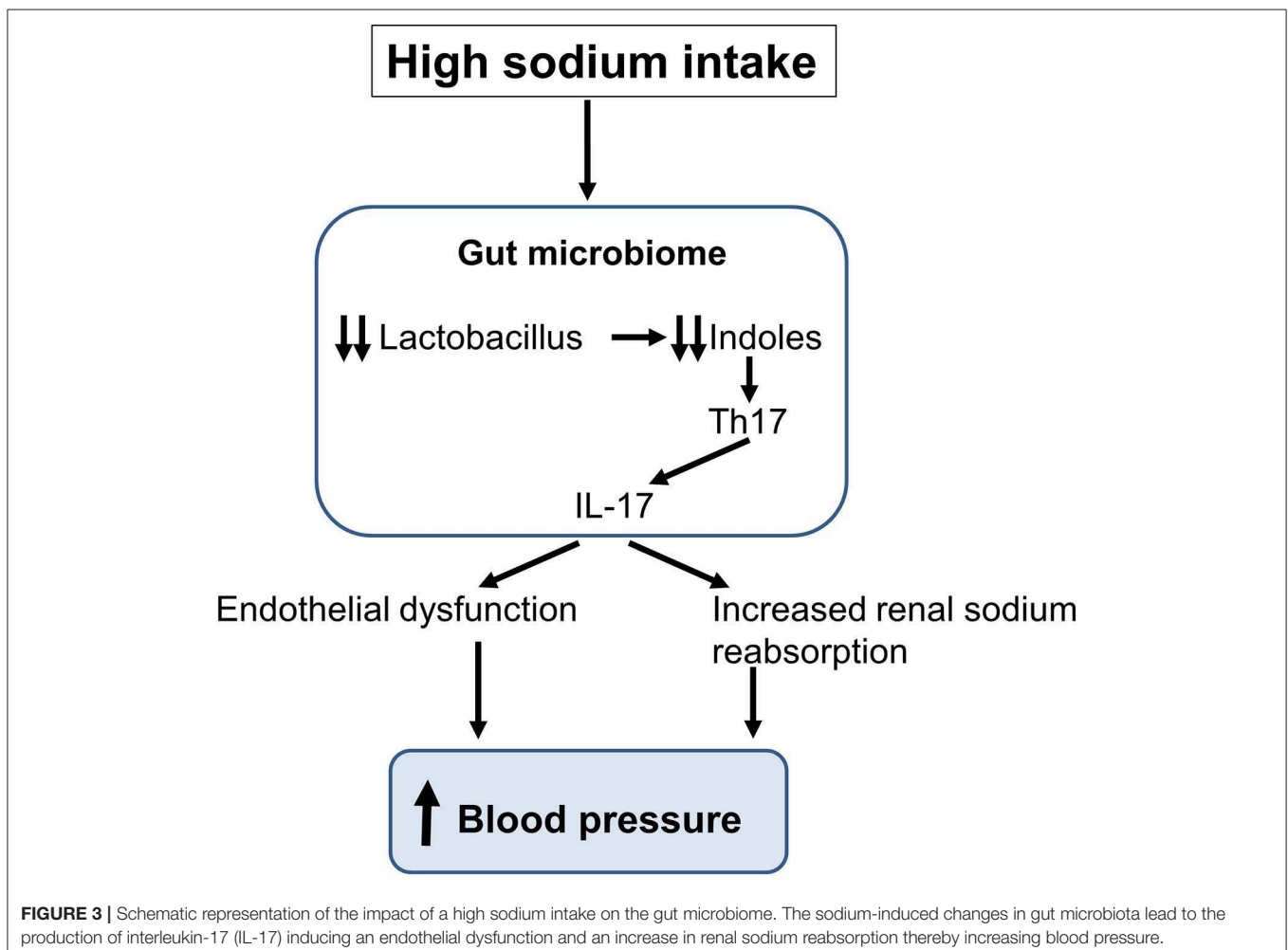


TABLE 1 | Major experimental and clinical observations having modified our understanding of the regulation of sodium balance and the role of sodium in the genesis of some forms of hypertension.

Observations	References
1. Despite a fixed salt intake, there are large variations in 24 h urinary sodium excretion with rhythmic fluctuations in total-body Na ⁺ within a day	(9)
2. Sodium is stored non-osmotically in tissues like skin and muscles	(12, 13)
3. Sodium content in skin and muscles can be measured by ²³ Na-magnetic resonance in animals and humans	(10, 22, 23)
4. Skin and muscle sodium are elevated in elderly, in hypertensive patients and in patients with type 2 diabetes on dialysis. Diuretics, adrenalectomy and dialysis reduce tissue sodium.	(10, 23–25)
5. Sweat participates in the regulation of sodium excretion	(32)
6. The immune system participates in the development and maintenance of salt-sensitive forms of hypertension	(38, 40, 45, 47, 49, 55)
7. A high sodium intake modifies the intestinal microbiota and may increase blood pressure via T-helper lymphocytes 17 and interleukin 17.	(64–68)

analyzing the T lymphocyte population in intestinal and splenic tissue, they found an increased frequency of Th17 lymphocytes in mice on a high-salt diet. Treatment with *Lactobacillus* enabled to reduce the number of Th17 lymphocytes in these tissues in animals on a high salt intake. Thus, a diet rich in sodium appears to affect intestinal microbiota, increasing intestinal Th17 cells. Together, these studies showed that modification of the gut microbiome by the excessive consumption of sodium increases the systemic inflammatory milieu (66). Moreover, analyzes of the gut microbiota in animals and humans with hypertension show similar modifications (65, 67–69).

CONCLUSIONS

Several new aspects of the role of sodium in the regulation of sodium balance and in the development of hypertension have been revealed in the last 10 years as summarized in **Table 1**. There

REFERENCES

1. Padmanabhan S, Caulfield M, Dominiczak AF. Genetic and molecular aspects of hypertension. *Circ Res.* (2015) 116:937–59. doi: 10.1161/CIRCRESAHA.116.303647
2. Frohlich ED. The first Irvine H. Page lecture. The mosaic of hypertension: past, present and future. *J Hypertens Suppl.* (1988) 6: S2–11. doi: 10.1097/00004872-198812040-00002
3. Coffman TM. Under pressure: the search for the essential mechanisms of hypertension. *Nat Med.* (2011) 17:1402–9. doi: 10.1038/nm.2541
4. Harrison DG. The immune system in hypertension. *Trans Am Clin Climatol Assoc.* (2014) 125:130–38; discussion 138–40.

is now evidence that sodium contributes to the pathogenesis of hypertension through an effect on the immune system. Sodium modulates the immune cell function and a high salt micro-environment in tissues can cause local inflammation, tissue damages and in some cases hypertension. Sodium is stored in a non-osmotically active manner in the skin and muscles and may be excreted through the sweat in response to a high salt diet, a newly described mechanism involving tissue macrophages. This storage may actually protect from an excessive increase in BP, excluding sodium from the intravascular space.

While small changes in plasma concentration of sodium are unlikely to induce inflammation, the hypothesis that larger and/or chronic increases in sodium trigger an inflammatory response is gaining more ground. However, as of today, one does not know precisely in which other tissues, besides skin and muscles, a high-salt environment may activate immune cells. Wiig et al. reported slight elevations in sodium concentrations in lymph capillaries in hypertensive rats (16). Another possible mechanism whereby salt would stimulate the immune system is that circulating antigen-presenting cells may be activated by high concentrations of sodium in peripheral tissues before turning into lymphoid tissues and activating T cells (70).

Further understanding of the exact mechanisms whereby sodium interacts with the immune system and gut microbiota might offer new opportunities for therapeutic approaches of hypertension with unexplored targets. A global immunosuppression of T lymphocytes may be excessive and associated with too many side effects and hence would not be appropriate to treat an asymptomatic disease, such as hypertension. Yet, specifically targeting key components regulating the T cell's contribution to BP regulation may still be an option, provided the therapy is safe and well-tolerated. Sustained modifications of the gut microbiota might represent another therapeutic approach that needs to be explored. However, today, reducing daily salt consumption to 5–6 g per day remains the easiest and most cost-effective way to limit the impact of sodium on blood pressure and to prevent the cardiovascular complications of hypertension.

AUTHOR CONTRIBUTIONS

MB, EP, and PB have written the paper. MB has done the figures.

5. Mattson DL. Immune mechanisms of salt-sensitive hypertension and renal end-organ damage. *Nat Rev Nephrol.* (2019) 15:290–300. doi: 10.1038/s41581-019-0121-z
6. Dahl LK. Salt and hypertension. *Am J Clin Nutr.* (1972) 25:231–44. doi: 10.1093/ajcn/25.2.231
7. Guyton AC. Blood pressure control—special role of the kidneys and body fluids. *Science.* (1991) 252:1813–6. doi: 10.1126/science.2063193
8. Guyton AC, Coleman TG, Cowley AV Jr, Scheel KW, Manning RD Jr, Norman RA Jr. Arterial pressure regulation. Overriding dominance of the kidneys in long-term regulation and in hypertension. *Am J Med.* (1972) 52:584–94. doi: 10.1016/0002-9343(72)90050-2

9. Rakova N, Jüttner K, Dahlmann A, Schröder A, Linz P, Kopp C, et al. Long-term space flight simulation reveals infradian rhythmicity in human Na⁺ balance. *Cell Metab.* (2013) 17:125–31. doi: 10.1016/j.cmet.2012.11.013
10. Kopp C, Linz P, Wachsmuth L, Dahlmann A, Horbach T, Schöfl C, et al. ²³Na magnetic resonance imaging of tissue sodium. *Hypertension.* (2012) 59:167–72. doi: 10.1161/HYPERTENSIONAHA.111.183517
11. Schaffhuber M, Volpi N, Dahlmann A, Hilgers KF, Maccari F, Dietsch P, et al. Mobilization of osmotically inactive Na⁺ by growth and by dietary salt restriction in rats. *Am J Physiol Renal Physiol.* (2007) 292: F1490–500. doi: 10.1152/ajprenal.00300.2006
12. Titze J, Shakibaei M, Schaffhuber M, Schulze-Tanzil G, Porst M, Schwind KH, et al. Glycosaminoglycan polymerization may enable osmotically inactive Na⁺ storage in the skin. *Am J Physiol Heart Circ Physiol.* (2004) 287: H203–8. doi: 10.1152/ajpheart.01237.2003
13. Fischereder M, Michalke B, Schmöckel E, Habicht A, Kunisch R, Pavelic I, et al. Sodium storage in human tissues is mediated by glycosaminoglycan expression. *Am J Physiol Renal Physiol.* (2017) 313: F319–25. doi: 10.1152/ajprenal.00703.2016
14. Titze J, Luft FC. Speculations on salt and the genesis of arterial hypertension. *Kidney Int.* (2017) 91:1324–35. doi: 10.1016/j.kint.2017.02.034
15. Nikpey E, Karlsen TV, Rakova N, Titze JM, Tenstad O, Wiig H. High-salt diet causes osmotic gradients and hyperosmolality in skin without affecting interstitial fluid and lymph. *Hypertension.* (2017) 69:660–8. doi: 10.1161/HYPERTENSIONAHA.116.08539
16. Wiig H, Schröder A, Neuhofer W, Jantsch J, Kopp C, Karlsen TV, et al. Immune cells control skin lymphatic electrolyte homeostasis and blood pressure. *J Clin Invest.* (2013) 123:2803–15. doi: 10.1172/JCI60113
17. Machnik A, Neuhofer W, Jantsch J, Dahlmann A, Tammela T, Machura K, et al. Macrophages regulate salt-dependent volume and blood pressure by a vascular endothelial growth factor-C-dependent buffering mechanism. *Nat Med.* (2009) 15:545–52. doi: 10.1038/nm.1960
18. Dahlmann A, Dörfelt K, Eicher F, Linz P, Kopp C, Mössinger I, et al. Magnetic resonance-determined sodium removal from tissue stores in hemodialysis patients. *Kidney Int.* (2015) 87:434–41. doi: 10.1038/ki.2014.269
19. Cowburn AS, Takeda N, Boutin AT, Kim JW, Sterling JC, Nakasaki M, et al. HIF isoforms in the skin differentially regulate systemic arterial pressure. *Proc Natl Acad Sci USA.* (2013) 110:17570–5. doi: 10.1073/pnas.1306942110
20. Johnson RS, Titze J, Weller R. Cutaneous control of blood pressure. *Curr Opin Nephrol Hypertens.* (2016) 25:11–5. doi: 10.1097/MNH.0000000000000188
21. Titze J, Bauer K, Schaffhuber M, Dietsch P, Lang R, Schwind KH, et al. Internal sodium balance in DOCA-salt rats: a body composition study. *Am J Physiol Renal Physiol.* (2005) 289: F793–802. doi: 10.1152/ajprenal.00096.2005
22. Lerchl K, Rakova N, Dahlmann A, Rauh M, Goller U, Basner M, et al. Agreement between 24-hour salt ingestion and sodium excretion in a controlled environment. *Hypertension.* (2015) 66:850–7. doi: 10.1161/HYPERTENSIONAHA.115.05851
23. Kopp C, Linz P, Dahlmann A, Hammon M, Jantsch J, Müller DN, et al. ²³Na magnetic resonance imaging-determined tissue sodium in healthy subjects and hypertensive patients. *Hypertension.* (2013) 61:635–40. doi: 10.1161/HYPERTENSIONAHA.111.00566
24. Wang P, Deger MS, Kang H, Ikizler TA, Titze J, Gore JC. Sex differences in sodium deposition in human muscle and skin. *Magn Reson Imaging.* (2017) 36:93–7. doi: 10.1016/j.mri.2016.10.023
25. Kopp C, Linz P, Maier C, Wabel P, Hammon M, Nagel AM, et al. Elevated tissue sodium deposition in patients with type 2 diabetes on hemodialysis detected by ²³Na magnetic resonance imaging. *Kidney Int.* (2018) 93:1191–7. doi: 10.1016/j.kint.2017.11.021
26. Deger SM, Wang P, Fissell R, Ellis CD, Booker C, Sha F, et al. Tissue sodium accumulation and peripheral insulin sensitivity in maintenance hemodialysis patients. *J Cachexia Sarcopenia Muscle.* (2017) 8:500–7. doi: 10.1002/jcsm.12179
27. Sato K, Kang WH, Saga K, Sato KT. Biology of sweat glands and their disorders. II. Disorders of sweat gland function. *J Am Acad Dermatol.* (1989) 20(5 Pt 1):713–26. doi: 10.1016/S0190-9622(89)70081-5
28. Cui CY, Schlessinger D. Eccrine sweat gland development and sweat secretion. *Exp Dermatol.* (2015) 24:644–50. doi: 10.1111/exd.12773
29. Hanukoglu I, Boggula VR, Vaknine H, Sharma S, Kleyman T, Hanukoglu A. Expression of epithelial sodium channel (ENaC) and CFTR in the human epidermis and epidermal appendages. *Histochem Cell Biol.* (2017) 147:733–48. doi: 10.1007/s00418-016-1535-3
30. Heer M, Baisch F, Kropp J, Gerzer R, Drummer C. High dietary sodium chloride consumption may not induce body fluid retention in humans. *Am J Physiol Renal Physiol.* (2000) 278: F585–95. doi: 10.1152/ajprenal.2000.278.4.F585
31. Lara B, Gallo-Salazar C, Puente C, Areces F, Salinero JJ, Del Coso J. Interindividual variability in sweat electrolyte concentration in marathoners. *J Int Soc Sports Nutr.* (2016) 13:31. doi: 10.1186/s12970-016-0141-z
32. Braconnier P, Milani B, Loncle N, Lourenco JM, Brito W, Maillard MP, et al. Short-term changes in dietary sodium intake influence sweat sodium concentration and muscle sodium content in healthy subjects. *J Hypertens.* (2019) 37:e62–3. doi: 10.1097/01.hjh.0000570980.69246.d1
33. Bocchi B, Kenouch S, Lamarre-Cliche M, Muffat-Joly M, Capron MH, Fiet J, et al. Impaired 11-beta hydroxysteroid dehydrogenase type 2 activity in sweat gland ducts in human essential hypertension. *Hypertension.* (2004) 43:803–8. doi: 10.1161/01.HYP.0000121362.64182.ad
34. Sainte Marie Y, Toulon A, Paus R, Maubec E, Cherfa A, Grossin M, et al. Targeted skin overexpression of the mineralocorticoid receptor in mice causes epidermal atrophy, premature skin barrier formation, eye abnormalities, and alopecia. *Am J Pathol.* (2007) 171:846–60. doi: 10.2353/ajpath.2007.060991
35. Sasano H, Fukushima K, Sasaki I, Matsuno S, Nagura H, Krozowski ZS. Immunolocalization of mineralocorticoid receptor in human kidney, pancreas, salivary, mammary and sweat glands: a light and electron microscopic immunohistochemical study. *J Endocrinol.* (1992) 132:305–10. doi: 10.1677/joe.0.1320305
36. Smith RE, Maguire JA, Stein-Oakley AN, Sasano H, Takahashi K, Fukushima K, et al. Localization of 11 beta-hydroxysteroid dehydrogenase type II in human epithelial tissues. *J Clin Endocrinol Metab.* (1996) 81:3244–8. doi: 10.1210/jcem.81.9.8784076
37. Zennaro MC, Farman N, Bonalet JP, Lombès M. Tissue-specific expression of alpha and beta messenger ribonucleic acid isoforms of the human mineralocorticoid receptor in normal and pathological states. *J Clin Endocrinol Metab.* (1997) 82:1345–52. doi: 10.1210/jcem.82.5.3933
38. Gu JW, Tian N, Shparago M, Tan W, Bailey AP, Manning RD. Renal NF-kappaB activation and TNF-alpha upregulation correlate with salt-sensitive hypertension in Dahl salt-sensitive rats. *Am J Physiol Regul Integr Comp Physiol.* (2006) 291: R1817–24. doi: 10.1152/ajpregu.00153.2006
39. Rodríguez-Iturbe B, Franco M, Tapia E, Quiroz Y, Johnson RJ. Renal inflammation, autoimmunity and salt-sensitive hypertension. *Clin Exp Pharmacol Physiol.* (2012) 39:96–103. doi: 10.1111/j.1440-1681.2011.05482.x
40. Krishnan SM, Dowling JK, Ling YH, Diep H, Chan CT, Ferens D, et al. Inflammation activity is essential for one kidney/deoxycorticosterone acetate/salt-induced hypertension in mice. *Br J Pharmacol.* (2016) 173:752–65. doi: 10.1111/bph.13230
41. Savoia C, Schiffrin EL. Vascular inflammation in hypertension and diabetes: molecular mechanisms and therapeutic interventions. *Clin Sci (Lond).* (2007) 112:375–84. doi: 10.1042/CS20060247
42. Schiffrin EL. The flame that lights the fire: oxidative stress, inflammation, and renal damage in angiotensin II-induced hypertension. *Hypertension.* (2008) 52:205–6. doi: 10.1161/HYPERTENSIONAHA.108.115402
43. Nataraj C, Oliverio MI, Mannon RB, Mannon PJ, Audoly LP, Amuchastegui CS, et al. Angiotensin II regulates cellular immune responses through a calcineurin-dependent pathway. *J Clin Invest.* (1999) 104:1693–701. doi: 10.1172/JCI7451
44. Okuda T, Grollman A. Passive transfer of autoimmune induced hypertension in the rat by lymph node cells. *Tex Rep Biol Med.* (1967) 25:257–64.
45. Olsen F. Type and course of the inflammatory cellular reaction in acute angiotensin-hypertensive vascular disease in rats. *Acta Pathol Microbiol Scand A.* (1970) 78:143–50. doi: 10.1111/j.1699-0463.1970.tb00249.x
46. White FN, Grollman A. Autoimmune factors associated with infarction of the kidney. *Nephron.* (1964) 1:93–102. doi: 10.1159/000179322
47. Rodríguez-Iturbe B, Pons H, Quiroz Y, Gordon K, Rincón J, Chávez M, et al. Mycophenolate mofetil prevents salt-sensitive hypertension resulting from angiotensin II exposure. *Kidney Int.* (2001) 59:2222–32. doi: 10.1046/j.1523-1755.2001.00737.x
48. Muller DN, Shagdarsuren E, Park JK, Dechend R, Mervaala E, Hampich F, et al. Immunosuppressive treatment protects

- against angiotensin II-induced renal damage. *Am J Pathol.* (2002) 161:1679–93. doi: 10.1016/S0002-9440(10)64445-8
49. Mattson DL. Infiltrating immune cells in the kidney in salt-sensitive hypertension and renal injury. *Am J Physiol Renal Physiol.* (2014) 307: F499–508. doi: 10.1152/ajprenal.00258.2014
 50. Wang QSA, Tschopp J, Burnier M. Impact of NLRP3 inflammasome on the development of hypertension and renal and cardiac hypertrophy in 2K1C and DOCA/Salt mice. *Kidney Research and Clinical Practice.* (2012) 31:A83. doi: 10.1016/j.krcp.2012.04.586
 51. Ramseyer VD, Hong NJ, Garvin JL. Tumor necrosis factor alpha decreases nitric oxide synthase type 3 expression primarily via Rho/Rho kinase in the thick ascending limb. *Hypertension.* (2012) 59:1145–50. doi: 10.1161/HYPERTENSIONAHA.111.189761
 52. Papaharalambus CA, Griendling KK. Basic mechanisms of oxidative stress and reactive oxygen species in cardiovascular injury. *Trends Cardiovasc Med.* (2007) 17:48–54. doi: 10.1016/j.tcm.2006.11.005
 53. Ozawa Y, Kobori H, Suzuki Y, Navar LG. Sustained renal interstitial macrophage infiltration following chronic angiotensin II infusions. *Am J Physiol Renal Physiol.* (2007) 292: F330–9. doi: 10.1152/ajprenal.00059.2006
 54. Wenzel P, Knorr M, Kossmann S, Stratmann J, Hausding M, Schuhmacher S, et al. Lysozyme M-positive monocytes mediate angiotensin II-induced arterial hypertension and vascular dysfunction. *Circulation.* (2011) 124:1370–81. doi: 10.1161/CIRCULATIONAHA.111.034470
 55. Rucker AJ, Rudemiller NP, Crowley SD. Salt, hypertension, and immunity. *Annu Rev Physiol.* (2018) 80:283–307. doi: 10.1146/annurev-physiol-021317-121134
 56. Xue B, Beltz TG, Yu Y, Guo F, Gomez-Sanchez CE, Hay M, et al. Central interactions of aldosterone and angiotensin II in aldosterone- and angiotensin II-induced hypertension. *Am J Physiol Heart Circ Physiol.* (2011) 300: H555–64. doi: 10.1152/ajpheart.00847.2010
 57. Rickard AJ, Morgan J, Tesch G, Funder JW, Fuller PJ, Young MJ. Deletion of mineralocorticoid receptors from macrophages protects against deoxycorticosterone/salt-induced cardiac fibrosis and increased blood pressure. *Hypertension.* (2009) 54:537–43. doi: 10.1161/HYPERTENSIONAHA.109.131110
 58. Bene NC, Alcaide P, Wortis HH, Jaffe IZ. Mineralocorticoid receptors in immune cells: emerging role in cardiovascular disease. *Steroids.* (2014) 91:38–45. doi: 10.1016/j.steroids.2014.04.005
 59. Zhang J, Rudemiller NP, Patel MB, Karlovich NS, Wu M, McDonough AA, et al. Interleukin-1 receptor activation potentiates salt reabsorption in angiotensin II-induced hypertension via the NKCC2 co-transporter in the nephron. *Cell Metab.* (2016) 23:360–8. doi: 10.1016/j.cmet.2015.11.013
 60. Wang R, Ferraris JD, Izumi Y, Dmitrieva N, Ramkissoon K, Wang G, et al. Global discovery of high-NaCl-induced changes of protein phosphorylation. *Am J Physiol Cell Physiol.* (2014) 307: C442–54. doi: 10.1152/ajpcell.00379.2013
 61. Yi B, Titze J, Rykova M, Feurecker M, Vassilieva G, Nichiporuk I, et al. Effects of dietary salt levels on monocyte cells and immune responses in healthy human subjects: a longitudinal study. *Transl Res.* (2015) 166:103–10. doi: 10.1016/j.trsl.2014.11.007
 62. Aron-Wisniewsky J, Clément K. The gut microbiome, diet, and links to cardiometabolic and chronic disorders. *Nat Rev Nephrol.* (2016) 12:169–81. doi: 10.1038/nrneph.2015.191
 63. Richards EM, Pepine CJ, Raizada MK, Kim S. The gut, its microbiome, and hypertension. *Curr Hypertens Rep.* (2017) 19:36. doi: 10.1007/s11906-017-0734-1
 64. Wilck N, Matus MG, Kearney SM, Olesen SW, Forslund K, Bartolomeaus H, et al. Salt-responsive gut commensal modulates TH17 axis and disease. *Nature.* (2017) 551:585–9. doi: 10.1038/nature24628
 65. Wyatt CM, Crowley SD. Intersection of salt- and immune-mediated mechanisms of hypertension in the gut microbiome. *Kidney Int.* (2018) 93:532–4. doi: 10.1016/j.kint.2018.01.001
 66. Haase S, Wilck N, Kleinewietfeld M, Müller DN, Linker RA. Sodium chloride triggers Th17 mediated autoimmunity. *J Neuroimmunol.* (2019) 329:9–13. doi: 10.1016/j.jneuroim.2018.06.016
 67. Yan Q, Gu Y, Li X, Yang W, Jia L, Chen C, et al. Alterations of the gut microbiome in hypertension. *Front Cell Infect Microbiol.* (2017) 7:381. doi: 10.3389/fcimb.2017.00381
 68. Li J, Zhao F, Wang Y, Chen J, Tao J, Tian G, et al. Gut microbiota dysbiosis contributes to the development of hypertension. *Microbiome.* (2017) 5:14. doi: 10.1186/s40168-016-0222-x
 69. Al Khodor S, Reichert B, Shatat IF. The microbiome and blood pressure: can microbes regulate our blood pressure? *Front Pediatr.* (2017) 5:138. doi: 10.3389/fped.2017.00138
 70. Foss JD, Kirabo A, Harrison DG. Do high-salt microenvironments drive hypertensive inflammation? *Am J Physiol Regul Integr Comp Physiol.* (2017) 312:R1–4. doi: 10.1152/ajpregu.00414.2016

Conflict of Interest Statement: The authors declare that the research was conducted in the absence of any commercial or financial relationships that could be construed as a potential conflict of interest.

Copyright © 2019 Polychronopoulou, Braconnier and Burnier. This is an open-access article distributed under the terms of the Creative Commons Attribution License (CC BY). The use, distribution or reproduction in other forums is permitted, provided the original author(s) and the copyright owner(s) are credited and that the original publication in this journal is cited, in accordance with accepted academic practice. No use, distribution or reproduction is permitted which does not comply with these terms.